



iSIZWE SAFETY

SAFETY STARTS WITH US

No.166 Bluff Road, Jacobs Industrial Park Unit No.6
Tel: (031) 461 1662 Email: info@isizwe-group.co.za



Value Creation is at the heart of Isizwe Safety . We are an exciting SME that focuses on delivering exclusive workwear solutions to South African businesses and individuals. Here at Isizwe Safety we believe that the best way to have a long term marriage between our business and you the customer is to keep you engaged in our product and services so that you can keep coming back again and again.

Our first step in providing you with excellent service is the simple act of listening to you, our customers. From listening we learn what works and what doesn't so we can create a better customer experience. For us at Isizwe Safety customer engagement isn't about getting down on one knee or opening a box with ring bling, but it is about celebrating the most crucial relationship to our business and that is the one between Isizwe Safety and our customer which is you.

We at Isizwe Safety also believe that price alone is not going to stand out in today's competitive environment. What our business clearly promotes is better customer service and satisfied customers . But we don't just make it the simple "please and thank you" variety. We at Isizwe Safety aim higher. We strive for fabulous, standout, outrageously great service to set our business apart from the crowd.

RememberAn effective training program can reduce the number of injuries, deaths, property damage, legal liability, illness, worker's compensation claims, and missed time from work.

Isizwe Safety has teamed up with KBS in ensuring proper training is carried out with regards to Dangerous goods and Safety Training. These courses are TETA & DOL Accredited, and will enable your workforce to remain confident and suitably qualified for any safety emergency. These courses are vital for effective efficiency and will allow your workforce to be prepared and cover the following areas :

- accident prevention and safety promotion
- safety compliance
- accident and emergency response
- personal protective equipment
- safety practices
- equipment and machinery
- chemical and hazardous materials safety
- workplace hazards
- employee involvement

Safety training programs help establish a safety culture in which employees themselves help promote proper safety procedures while on the job. For convenience and to minimize downtime come visit our Branch at 166 Bluff Road, Durban. We have a dedicated training centre that is fully equipped to handle all your training needs as well as a wide range of protective clothing to get you kitted up and back on the job. Prices are very competitive and with the quality input, you can be rest assured that your workforce will not only be protected, but you will have a healthy bottom line as well. Our store is open not only to Companies but individuals as well. Come in and start safety with us.!!



KZN BUSINESS SOLUTIONS

Courses Available :

- Dangerous Goods
- Defensive Driving
- Driver-In Cab Assessments
- First Aid Level 1
- Basic Fire Fighting
- Fatigue Management
- Forklift
- Truck Mounted Crane
- Spillage Control
- SHE Rep
- Working @ Heights



Safety footwear has become an unavoidable part of life for many dangerous professions, particularly in light of increasingly strict health and safety at work laws.

But is safety footwear really essential in dangerous trades, and do we really need safety work wear in any line of work? As compared to a regular pair of shoes or boots, safety footwear is specifically designed to protect the feet in dangerous environments. Take your average building site for example. A construction site is a dangerous playground filled with bricks, heavy timber, nails, concrete, lethal machinery. In this type of environment accidents do happen, and they happen frequently. Without safety footwear, there would undoubtedly be far more instances of protruding nails penetrating feet, and crushed toes from heavy weight. If not for properly supported, solid safety footwear, these regular accidents would be far more severe, and cause far more problems for the employees concerned. Is it important to have safety footwear in this kind of scenario?

Safety footwear is designed for the sole purpose of protecting the wear in dangerous situations, whether directly or indirectly. On top of the safety advantages, these safety shoes and boots also help ensure you don't ruin your work hours, providing a duality of benefit that makes them essential to own for those involved in dangerous or risky trades such as construction, or any form of dangerous manual labour.



LEMAITRE EROS
Exceptional comfort and stylish.
Lightweight and tough.
Steel toe cap resisting to 200J.
Oil and acid resistant.
Double density PU sole.
Heat resistant to 90°C.
Antistatic.
SABS approved.
Size: 5-12
Colour: Black and Brown



LEMAITRE ZEUS
Chelsea boot.
Stylish, lightweight and tough.
Steel toe cap resisting to 200J.
Oil and acid resistant.
Double density PU sole.
Heat resistant to 90°C.
Antistatic.
SABS approved.
Size: 5-12
Colour: Black and Brown



LEMAITRE MAXECO
Chukka boot.
Lightweight and tough.
Steel toe cap resisting to 200J.
Oil and acid resistant.
Double density PU sole.
Heat resistant to 90°C.
Antistatic.
SABS approved.
Size: 3-13
Colour: Black and Tan



LEMAITRE ROBUST
Lightweight and tough.
Steel toe cap resisting to 200J.
Oil and acid resistant.
Double density PU sole.
Heat resistant to 90°C.
Antistatic.
SABS approved.
Size: 3-13
Colour: Black and Tan



LEMAITRE EXPLORER
Wide fitting last.
Lightweight and tough.
Steel toe cap resisting to 200J.
Oil and acid resistant.
Double density PU sole.
Heat resistant to 90°C.
Antistatic.
SABS approved.
Size: 5-12
Colour: Black/Reflective



LEMAITRE SPORT
Exceptional comfort, lightweight and tough.
Steel toe cap resisting to 200J.
Oil and acid resistant.
Double density PU sole.
Heat resistant to 90°C.
Antistatic.
SABS approved.
Size: 2-12
Colour: Black/Green



LEMAITRE NOMAD
Wide fitting last.
Lightweight and tuff.
Steel toe cap resisting to 200J.
Oil and acid resistant.
Double density PU sole.
Heat resistant to 90°C.
Antistatic.
SABS approved.
Size: 5-12
Colour: Black and Tan



LEMAITRE QUEST
Wide fitting last.
Lightweight and tough.
Steel toe cap resisting to 200J.
Oil and acid resistant.
Double density PU sole.
Heat resistant to 90°C.
Antistatic.
SABS approved.
Size: 5-12
Colour: Black and Brown



BOVA BREMEN

A comfortable safety shoe with anti-fatigue engineering.
Double density PU/PU sole.
Heat resistant up to 95°C.
Extra-wide fitting steel toe cap.
Padded bellows tongue for extra comfort.
Engineered with a Poron insert at the heel for additional comfort.
Poron/EVA cushioned top sock for additional comfort.
Generous styled upper for increased foot space.
Full grain leather upper.
Approved by the South African Podiatry Association.
Midsole option available.
Oil and acid resistant.
Slip resistant.
Antistatic.
SANS/ISO 20345.
SABS approved.
Size: 5-13



BOVA NEOFLEX

A high-wearing safety boot with all-leather upper and tongue.
Double density PU/PU sole.
Heat resistant up to 95°C.
Steel toe cap.
Energiser top sock for additional comfort.
Full grain leather upper.
Midsole option available.
Oil and acid resistant.
Slip resistant.
Antistatic.
SANS/ISO 20345.
SABS approved.
Size: 3-15
Colour: Black and Tan



BOVA ADAPT

A durable, entry-level safety boot.
Single density PU sole.
Heat resistant up to 95°C.
Steel toe cap.
Energiser top sock for additional comfort.
Genuine leather upper.
Kevlar midsole option available.
Oil and acid resistant.
Slip resistant.
Antistatic.
SANS/ISO 20345.
SABS approved.
Size: 5-13
Colour: Black



BOVA WELDERS

A welder-specific boot with spat covering for extra burn defence.
Double density PU/Rubber sole.
Heat resistant up to 300°C.
Steel toe cap.
Padded collar and ½ padded bellows tongue for extra comfort, protection and ankle support.
Engineered with a spat covering to prevent hot metal burns and exposure to sparks.
Full grain leather upper.
Midsole option available.
Oil and acid resistant.
Slip resistant.
Non-conductive.
SANS/ISO 20345.
SABS approved.
Size: 5-13
Colour: Black





DOT GRANITE
 Genuine split buffalo leather upper.
 Dual density PU sole.
 Steel toe cap.
 Oil and acid resistant.
 Slip resistant.
 Antistatic.
 ISO 20345.
 SABS approved.
 Size: 3-13
 Colour: Black



DOT NEON (LADIES)
 Genuine split buffalo leather upper.
 Dual density PU sole.
 Steel toe cap.
 Oil and acid resistant.
 Slip resistant.
 Antistatic.
 Size: 2-8



DOT TUNGSTEN
 Executive Mining Boot
 Heat resistant sole to 300°C
 Toughened Nitrile Outsole for Durability and Protection
 Full-Grain Smoother Leather Upper
 Super Comfort EVA/Nitrile Rubber Sole
 Non-Conductive Rubber
 Moulded anti-static innersole
 Advanced Abrasion Resistance
 Ergonomic Upper Padding and Cambrelle Inner Lining
 Steel Toe Cap with Impact Protection of 200Joules
 Shock Absorbent Heel
 Wider Cut for Added Comfort
 Stylish Design
 Sizes: 3-13
 Colour: Black



DOT COBALT
 Genuine split buffalo leather upper.
 Dual density PU sole.
 Steel toe cap.
 Oil and acid resistant.
 Slip resistant.
 Antistatic.
 ISO 20345.
 SABS approved.
 Size: 3-13
 Colour: Black





SISI ANGELINA

A hard-wearing, stylish women's shoe.
Double density PU/PU sole.
Heat resistant up to 95°C.
Steel toe cap.
Padded bellows tongue for extra comfort.
Generous styled upper for increased foot space.
EVA cushioned top sock for additional comfort.
Five pair eyelet lace up.
Full grain leather upper.
Kevlar midsole option available.
Oil and acid resistant.
Slip resistant.
Antistatic.
SANS/ISO 20345.
SABS approved.
Size: 3-8
Colour: Grey/Pink



SISI PARIS

A slip-on women's shoe with extra comfort features.
Single density PU sole.
Heat resistant up to 95°C.
Steel toe cap.
Elastic side gussets for additional comfort.
Full grain leather upper.
Kevlar midsole option available.
Oil and acid resistant.
Slip resistant.
Antistatic.
SANS/ISO 20345.
SABS approved.
Size: 3-8
Colour: Black



SISI COURT

A practical slip-on corporate shoe specifically designed with office workers in mind
Single density PU sole
Heat Resistant up to 95°C
Available with and without a steel toe cap
Antistatic
SANS/ISO 20345
SABS approved
Size: 3-8

SISI

STYLE MEETS SAFETY



BICKZ HURRICANE

Strong and lightweight footwear.
Phylon midsole and rubber outsole.
Steel toe cap.
High grip sole.
Oil resistant and solvent resistant.
Reflective features.
CE 20345.
Size: 5-12
Colour: Black

Bickz
BY BATA



Protective overalls or coveralls are used as a uniform for some professions. They come in various styles, fabrics and thicknesses depending on the user's needs. Some workers need liquid tight weaves to keep out moisture or dangerous chemicals, while others need protective fabrics that breathe to keep them cooler.

Why protective [work wear](#) is important in the workplace, is that it provides for the safety and reduces a workers exposure to hazards, when administrative and engineering controls cannot reduce the risks to acceptable levels. The practice of using protective work wear has a hierarchy of control that provides a framework that ranks the type of hazard for risk reduction. The type of hazard, area of body protected and type of accessory or garment categorize protective work wear. Isizwe Safety carries a wide range of workwear suited for various working conditions. Our garments are manufactured to the highest standards and provide you with confidence in any application. We stock: Flame / Acid Resistant Overalls, Acid Resistant Overalls, 100% (j54) Cotton Overalls, PolyCotton Overalls, Disposable Workwear, Dustcoats and Trousers.



ROYAL BLUE CONTI SUIT 2 PIECE

Jacket : concealed zip front

2 hip pockets/1 chest pocket

Trouser: elasticated waistband

2 hip swing and 1 back patch pocket

Triple stitched at known stress points

Poly-cotton fabric

Ideal for construction, industry and farming

Available with or without Tape



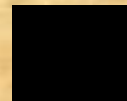
ORANGE



NAVY BLUE



RED



BLACK



GREY



EMERALD GREEN

Please note that Royal Blue overalls are available immediately whilst other colours are available on special request and require a minimum waiting period.



D59 FLAME AND ACID RETARDANT CONTI SUIT

Jacket features include concealed YKK zip, chest pocket with V-flap and press-stud, hanger loop, side slits and elasticated cuffs. Pants have ½ elasticated waistband, triple top-stitching on front and back rise and also on the inner and outer leg. Additional features include two swing pockets, money pocket, side tool pocket and one back patch pocket.

- 300g 100% Cotton with acid and flame retardant finish
- Reinforced bar-tacked seams and pressure points
- Reflective tape on elbows & knees
- SABS Approved

NB: SOLD ACCORDING TO JACKET SIZES.

Who needs a Flame Retardant Conti Suit?

Anyone who works with a risk of ignition in the workplace. For instance anyone who works in a foundry or refinery environment, dealing with flame cutting and welding, firefighters, anyone in an aluminum casting or petrochemical industry, as well as electrical utility and the chemical, oil, and mining industries.

How do normal fabrics react to ignition?

Normal fabrics and garments will burn away from the point of ignition with an increasing rate of flame spread and continue to burn after removal of the ignition source. Normal fabrics will continue to burn until they are extinguished or all flammable material is consumed.

How do FR fabrics react to ignition?

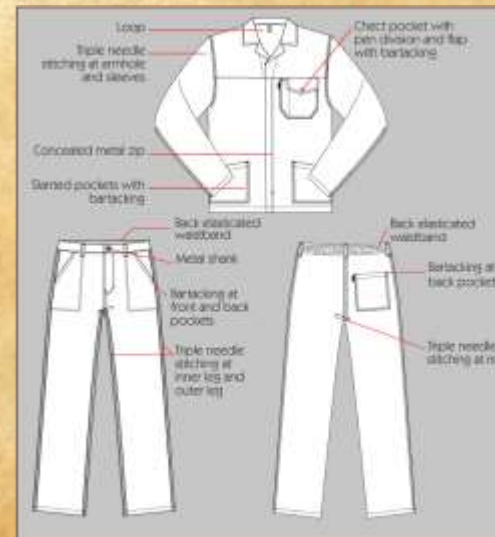
Flame-resistant (FR) fabrics and garments are intended to resist ignition, prevent the spread of flames away from the immediate area of high heat impingement, and to self-extinguish almost immediately upon removal of the ignition source.

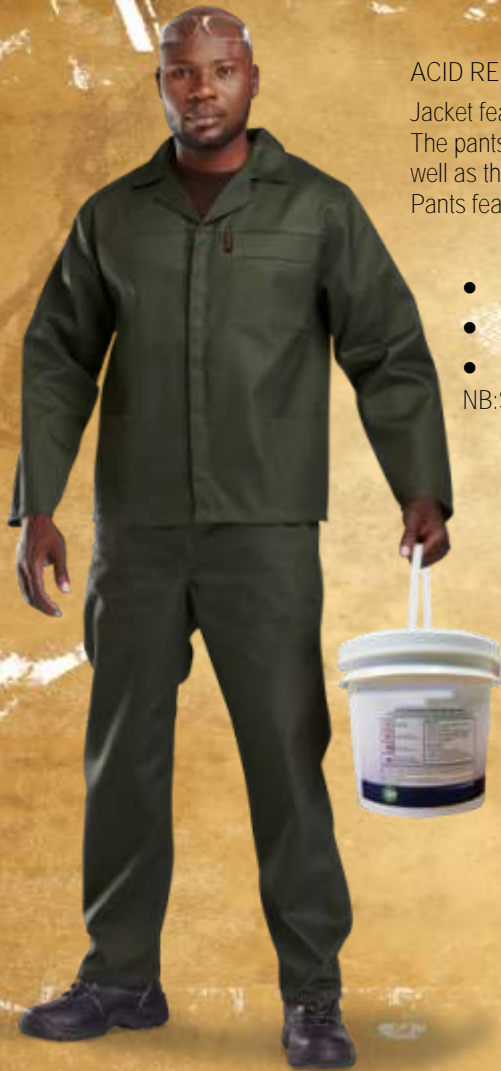




SUPREME 100% COTTON CONTI SUIT

- Jacket features include concealed YKK zip and twin-needle top-stitched mitred chest pocket with V-flap and pen division.
 - For added durability triple-stitching has been added to the armholes and underarm. Pants have ½ elasticated waistband, triple top-stitched front and back rise and double top-stitched side pockets and one back pocket.
 - 220g 100% Cotton [Colour Navy, Blue]
 - Triple-stitched inner & outer leg
 - Reinforced bar-tacking on seams and all pressure points
- NB: SOLD ACCORDING TO JACKET SIZES.





ACID RESISTANT POLY COTTON CONTI SUIT

Jacket features include two side pockets, Monza chest pocket with double top-stitching. The pants have ½ elasticated waistband with triple-stitching on the inner and outer leg as well as the back and front rise.

Pants feature two side pockets and one back pocket.

- Poly cotton with acid resistant finish
- Concealed YKK metallic zips
- Bar-tacking on pressure points

NB:SOLD ACCORDING TO JACKET SIZES.



POLY COTTON DUST COAT

An industry standard for lab, warehouse , workshop & general maintenance applications. Garment features include single chest & two front pockets, with durable self- colour plastic buttons for non-scratch wear. High length

- Button- through front
- 210g Poly cotton twill fabric



The workplace can create many hazards for your *hands*, whether from chemicals, cuts or burns. No single glove can provide appropriate protection for every work situation, so it is important to assess the risk for each task and select a glove that provides specialized protection.

Cotton and fabric gloves: These can keep hands clean and protect against abrasions, but may not be strong enough to handle work with rough or sharp materials.

Coated fabric gloves: This type of glove can provide protection against some moderate concentrated chemicals. They can be used in laboratory work provided they are strong enough to protect against the specific chemical being handled.

Rubber, plastic or synthetic gloves: These types of glove can be used when cleaning or working with oils, solvents and other chemicals.

Leather gloves: These should be used when welding, as the leather can resist sparks and moderate heat. The risk of cuts and abrasions also can be minimized by wearing leather gloves.

Aluminized gloves: These gloves are recommended for welding, furnace and foundry work, as they provide reflective and insulating protection.

Butyl rubber gloves: nitric acid, sulfuric acid, hydrochloric acid and peroxide

Natural latex/rubber gloves: water solutions or acids, alkalis, salts, and ketones

Neoprene gloves: hydraulic fluids, gasoline, alcohols and organic acids

Nitrile rubber gloves: chlorinated solvents



CANDY STRIPE RIGGER PALM

Re-inforced palm for superior strength, used for general applications



TIG WELDING GLOVE

Welders or drivers glove, tan dyed pigskin premium grain leather



CANDY STRIPE REGULAR

General handling operations, leather palm, candy back



GREEN LINED WRIST

Welding related operations, mechanical use



PVC ELBOW LENGTH

Resistance to acids, fats, oils, petroleum. Good abrasion protection for both wet and dry applications



PVC KNIT WRIST

Interlocked cotton liner with knitted wrist. Outstanding abrasion protection.



BLUE NITRILE HEAT GLOVE

Heavy Duty for construction and mechanical applications



COMAREX KNIT WRIST

Heavy duty, hard wearing and slip resistant.



Reflective safety clothing is used in many industries to provide protection from many different hazards and is available in a variety of items. Reflective shirts, vests, jackets, pants, belts, and hats are the most popular.

High visibility safety apparel can be life saving protective wear for people required to work around moving traffic, construction equipment, vehicular accident sites, and child protection situations. With options to wear protective pants, vests, shirts, jackets, and a variety of belts, arm bands, and hats, high visibility safety apparel is effective and relatively low cost considering the valuable commodity they are protecting.



REFLECTIVE JACKET WITH ID POUCH

Light weight waistcoat with ID pocket. Available in two safety colours.

100% Polyester fabric
Full zip front
Front & back reflective tape
Lime /Orange



FORCE JACKET

New high visibility mesh jacket with epaulettes and removable sleeves which makes it versatile workwear garments. It features a full frontal zip with a solid chest and back panel for branding.

2 Side pockets
Elasticated cuffs and waistband
Reflective tape



MESH BIB

100% Mesh polyester fabric
Reflective tape
Lime/Orange
Adjustable straps



CONVOY JACKET

Versatile jacket with elasticated cuff, full zip front and toweling. Draw cord and toggles on the hood and waist. Available in two safety colours.

100% Nylon water resistant outer fabric
Concealed hood
Reflective tape for hi-visibility

SAFETY ACCESSORIES



CLEAR GRNDING GOGGLE



CLEAR SPECTACLES



FLIP FRONT GAS WELDING GOGGLES



STANDARD EARMUFF



SABS APPROVED HARD HATS



DISPOSABLE EARPLUGS CORDED



FFP1 DUST MASKS



FFP2 DUST MASKS



FIRST AID KITS



BARRIER TAPE



RESPIRATORS



DISPOSABLE WEAR



BARRON 175G PIQUE KNIT GOLFER

Poly cotton fabric blend for comfort and durability. Three button reinforced placket with top-stitching. Also features self-fabric neck tape on collar seam. Massive range of colours.

175g 65/35 Poly cotton fabric

Double-needle finish on sleeves & hem
BARRON trademark two ridge collar



POLY COTTON CHINO

Blended fabric resists creasing and holds colour. Durable and classically smart for semi formal look. Top-stitched for added durability.

245g Non-crease blended poly cotton fabric

Classic pleated chino styling with turn-ups
Two back pockets



BARRON MAC CONCEALED JACKET

An industry standard in outer garments. Draw cord and toggles on hood and hem. Spandex-reinforced ribbed cuffs. Available in five colours.

100% Polyester water resistant outer fabric

Concealed hood with zip away design

Welted side pockets

Water and wind resistant